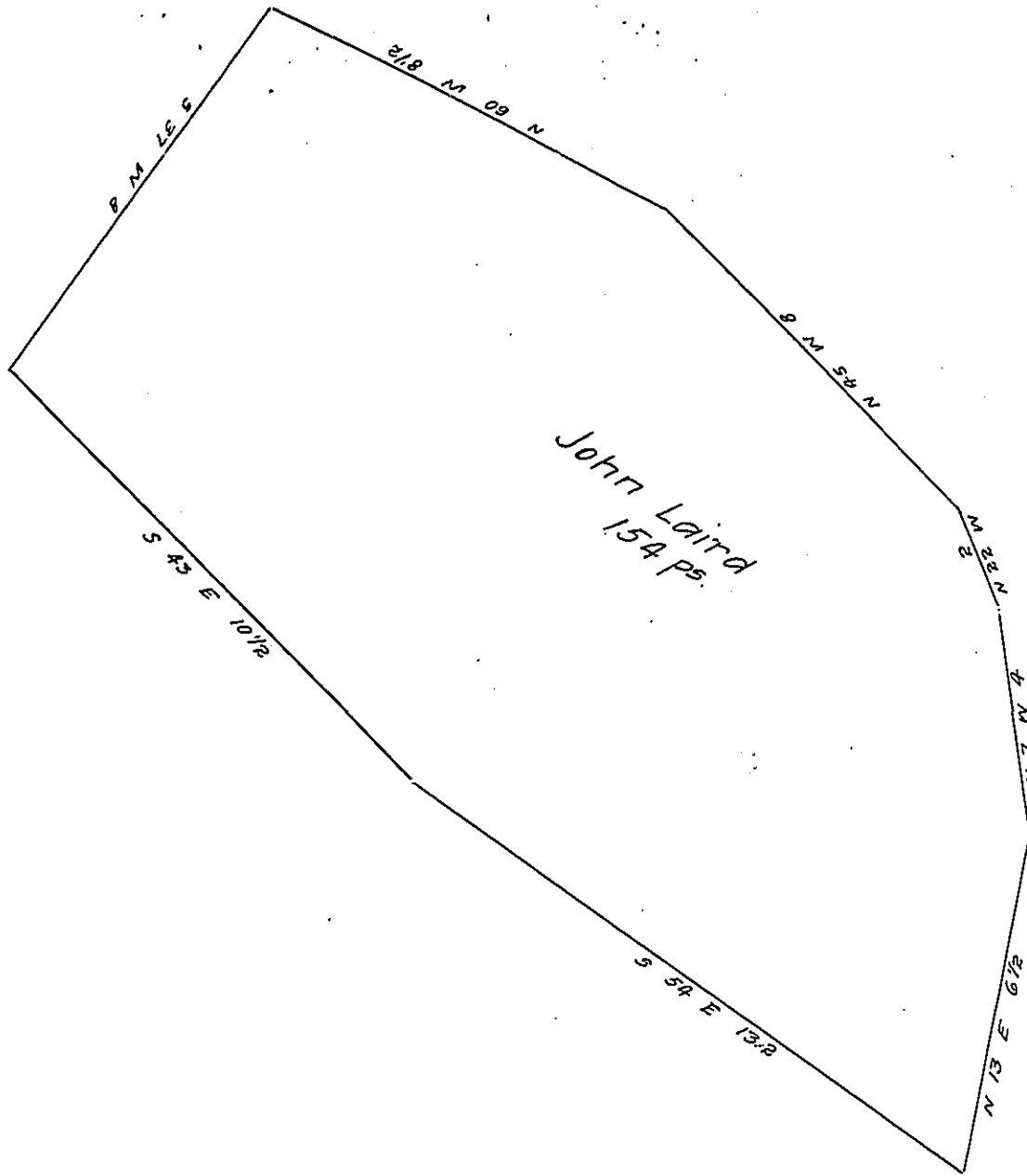


FORM NO. 1.

York County Shore.



Lancaster County Shore

A draught of Long Rock Island situate in the river Susquehanna in Martic township in the County of Lancaster opposite land of Peter Young and George Sides on the Lancaster shore and opposite to land of mine on the York shore about twenty perches above Peter Young & George Sides's Island containing one hundred and fifty four perches strict measure Surveyed in pursuance of a warrant dated the 2nd day of March A.D. 1819 granted to John Laird.

Pr Jacob Hibshman. D.S.

To Jacob Spangler Esq.
Surveyor General.

IN TESTIMONY that the above is a copy of the original remaining on file in the Department of Internal Affairs of Pennsylvania, made conformably to an Act of Assembly approved the 16th day of February 1833, I have hereunto set my hand and caused the Seal of said Department to be affixed at Harrisburg, this third day of January 1908

Henry Howells
Secretary of Internal Affairs.